

MID LOES BENEFICE
Ashfield-cum-Thorpe, Charsfield with Debach
Cretingham, Dallinghoo, Earl Soham,
Hoo, Letheringham and Monewden

April 2020

From Your Curate

At the time of writing we are all being bombarded with information concerning Coronavirus. There seem to be updates on the current situation almost on an hourly basis. Like everyone else I am anxious about the future and fearful of the unknown. I do not have the knowledge and am not in a position to offer advice on Coronavirus, but like you, what we can do is listen to professional advice, act upon it and try to reassure others. Particularly the old and vulnerable, and offer our help where needed

I was listening to a discussion on the radio about when our society changed from an us society to a me society. In an us society people are prepared to give up things for the greater good of the community, whereas in a me society obviously people put themselves first. I don't think there was an answer to when this may have happened --- what do you think? The me society is being clearly demonstrated at the moment with the clearance of supermarket shelves and the reluctance of some to give up travel. But the us society has also shown itself today by the number of phone calls I have had asking "what can we do to help?"

The answer to the question 'what can we do to help?' must be to look out for each other. Making sure that those who are unable to get out have everything they need, even if that is just a chat on the phone. I know this always happens in villages in a crisis, but this is different, it appears that we are in this for the long haul, we are all in this together. With prayer, love, care and support we can get through this.

This poem always stood on my father's bedside cabinet, I think he found comfort in the words and so do I.

Are you standing at 'WIT'S END CORNER.'
Christian with troubled brow?
Are you thinking of what is before you,
And all you are bearing now?
Does all the world seem against you,
And you in the battle alone?
Remember, at 'WIT'S END CORNER.'
Is just where God's Power is shown

Trust in the Lord with all your heart. *Proverbs 3: 5*
Kathleen

CHURCH SERVICES SUSPENDED

~~The Archbishops of Canterbury and York and our diocesan bishops have asked for all church services to be suspended for the present, due to the Coronavirus pandemic, and we will be abiding by this advice in the Mid Loes Benefice. The churches will remain open for people to use for private prayer and reflection, whilst adhering to the 'social distancing' principle of two metres. We must all do our best to protect the most vulnerable. Kathleen and I will be working out the best way to maintain the spiritual life of the benefice during this difficult period, but local initiatives that abide by the necessary principles will also be welcome. Please let me know of anything you have in mind. For further details and suggestions, please visit the diocesan and Church of England websites.~~

~~SB~~

BENEFICE TREASURER

Ros Wilson will be retiring as Benefice Treasurer in April after a number of years and a replacement is needed to handle the (fairly limited) finances of the Benefice. If you could handle this role please contact Ros (arw@headstart.it).

PRAYER FOR HEALING

A small group meets every month and if you would like prayer for yourself or someone close who is ill or in any kind of need please get in touch with any of the following:

Stephen Brian - 01728 685 308
Kathleen Martin - 01473 737 285
Pauline Cobley - 01473 737 317
Margaret Salter - 01473 737 182

Your call will be treated in the strictest confidence .

PLEASE NOTE:

The contents of this magazine were correct at time of writing, however with advice changing everyday you may find that events will be cancelled and advice differ, please follow all government recommendations.

CORONAVIRUS AND CHURCH SERVICES

By the time this magazine reaches you the situation in respect of coronavirus will have moved on from when I am writing this - 15th March. However, I hope that the generic website addresses will still offer practical sources of worship opportunities for those who wish them.

Our Diocesan Bishop and Bishop Mike are live-streaming the Daily Office services along with a "Thought for the Day". Please go to

<https://www.facebook.com/BishopsCofEsuffolk>

This may also be accessed via a link on the main Diocesan website www.cofesuffolk.org

Nationally the Church of England is live streaming services from the following churches - offering a variety of worship styles and service patterns:

All Hallows by the Tower, City of London. <https://www.ahbtt.org.uk/live-stream/>

Buckingham Parish Church [https://www.bpchurch.uk/Groups/224904/Buckingham Parish Church/Whats On/Services/Livestream Services/Livestream Services.aspx](https://www.bpchurch.uk/Groups/224904/Buckingham%20Parish%20Church/Whats%20On/Services/Livestream%20Services/Livestream%20Services.aspx)

St Nicholas, Canvey Island. <https://thesundayservice.gallery.video/stnicholascanvey>

St James' Church, Clitheroe. <https://www.youtube.com/channel/UCI-G5lrRtm4g5h9yzVkogAw/videos>

St Mary's, Kenton, Harrow. <https://www.stmaryskenton.org/live-church-webcam/>

Alister Gourlay - Churchwarden, St Peter's Cretingham

EARL SOHAM NOTES

Rota for the Altar and Roll of Honour Flowers and Brasses-St. Mary's		
APRIL	Mrs Tinkler	Easter Sunday 12th April
MAY	Mrs Cotton	Mrs Stoter
Any problems phone Lyn—685278		

Earl Soham Village Hall AGM

It was proposed to hold the Earl Soham Village Hall AGM on Saturday 4th April before Film Night. but due to the current situation across the Country it has been decided to postpone it until further notice.

Note Film night will go ahead at the moment but this could change

EARL SOHAM BOWLS CLUB

Established 1789



**Our 2020 season begins on Saturday,
25th April at 2.30 p.m.**

If you are an absolute beginner (or a lapsed bowler) and would like to give lawn bowls a try please feel free to come along for an informal session on the above date or on any of the following Saturdays - you will be most welcome.

Spare woods will be available - just be sure to wear flat-soled footwear.

Free coffee or tea will be served to all visitors

More detailed information about the club is available from
Pam Sykes, Secretary,

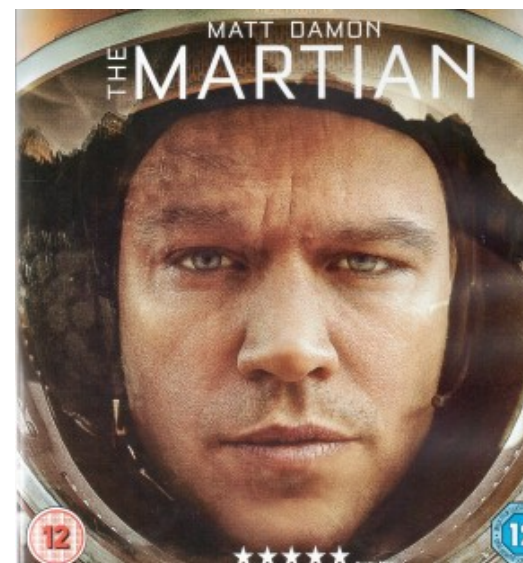
who can be contacted as follows:

Telephone: 01728 685519 or e-mail: pamrogsykes@aol.com

EARL SOHAM FILM NIGHT

7.30pm Saturday 4th April 2020

EARL SOHAM VILLAGE HALL



THE MARTIAN

Legendary director Sir Ridley Scott brings us the story of American astronaut Mark Watney (Matt Damon) who, during a manned mission to Mars, is presumed dead and is left behind by his crew. Watney, however, is still very much alive, and must find a way to contact Earth - and to survive on a barren planet with meagre supplies - in the hope that a team of scientists on Earth can devise a near-impossible rescue plan to bring him home.

Certificate 12. Running time 141 minutes. Infrequent strong language, injury detail. (2015)

EARL SOHAM COMMUNITY PRIMARY SCHOOL
Earl Soham PTFA – fundraising during the Covid19 crisis

The coronavirus pandemic is affecting us all. At the time of writing, many countries have closed their schools and it is possible that the UK will follow. We need to protect the most vulnerable in our community by cutting down drastically on non-essential gatherings that could speed the spread of the virus. We have already postponed indefinitely our PTFA Fashion & Fizz event that was scheduled for 27 March, and it is unlikely that we will be holding other fundraising events in the near future. This of course presents the PTFA with a problem as the funds raised each year make a huge difference to supporting the children's education. We are therefore having a look at the alternative ways that people can support us. Online shopping is one way: you can contribute every time you make an Amazon purchase by clicking via Amazon Smile (<https://smile.amazon.co.uk/>) and selecting Earl Soham PTA as your charity, and you can donate when you visit many other online retailers via <https://www.easyfundraising.org.uk/causes/earlsohamcps/>. We are also going to set up an online raffle for the bottles of Prosecco not used at the cancelled event – please contact patrickgoymer@hotmail.com to buy tickets, and you can also contact Patrick if you are interested in setting up a standing order or making a one-off donation. We will also try to keep our website (<https://www.earlsoham.suffolk.sch.uk/ptfa/>) up to date with information.

Many thanks, and stay safe!

DATES: (at the time of writing before any potential government restrictions)

Thursday 2nd April - last day of the spring term

Tuesday 21st April – first day of the summer term for students



Earl Soham WI

The WI provides women with educational opportunities, the chance to build new skills, take part in a wide variety of activities and campaign on issues that matter to them and their communities. Our meetings are held at 7.30pm on the fourth Thursday of the month in Earl Soham village hall. We have a speaker or entertainment, enjoy lively discussions about WI campaigns, and as we are the WI, always make time to have a chat to get to know one another whilst enjoying some great refreshments!

Why not come along, join in and make a lot of new friends?

Next Meeting

7.30pm Thursday 23rd April

Our speaker will be Pip Wright talking about Lady Alice de Bryene and giving us an insight into the 14th century

WI Secretary: Mrs Daphne Dale 01728 621292





DR DAN POULTER MP

Member of Parliament for Central Suffolk and North Ipswich

Perhaps it is because I am an NHS doctor myself, but ever since I was first elected as an MP almost 10 years ago, I have always taken a very keen and protective interest in Ipswich Hospital.

My first battle on behalf of local patients was to fight to keep cardiac services based at Ipswich Hospital, and to ensure that people with a heart attack would not have to travel many miles for life saving treatment. We won that battle and I was pleased to play my part in helping to gain funding for the new cardiology unit.

Since then, Ipswich and Colchester Hospitals have merged. Understandably, hospital mergers can cause anxiety and of course, there can be challenges, but in my view, this particular merger has largely been a success. Ipswich Hospital will soon see further improvements to its Accident and Emergency department, and there will be a new purpose built elective surgical unit for orthopaedic patients at the Colchester site.

This new elective surgical unit does not mean that patients in Suffolk will be missing out, but quite the opposite as instead, it will help to improve and expedite care. Far too often during the busy winter periods, patients from Suffolk awaiting a hip or knee operation unfortunately have operations cancelled due to bed capacity issues. Emergency orthopaedic operations and all follow up care will still take place at Ipswich Hospital, but the new and dedicated elective unit will mean fewer cancelled operations, which can only be good news for patients waiting in pain and discomfort for their operations.

At a recent visit with Ipswich Hospital Chief Executive, I was shown around the newly commissioned isolation pods for people presenting themselves with possible Coronavirus symptoms and to learn more about the plans in the event of any cases in Suffolk. These isolation pods are ready for use in every general hospital around the country and our clinical professionals are very well prepared to deal with potential cases.

Understandably, people are becoming increasingly concerned about the potential for Coronavirus to arrive in Suffolk, but it's important not to worry too much. Our NHS is in a good place and our local health services are well prepared. The best way of helping to stop the virus spreading is by ensuring good hand hygiene measures – washing your hands regularly, for at least 20 seconds and covering your mouth or nose with a tissue when you cough or sneeze and disposing of the tissue in the bin. Further advice is available from NHS Online (www.111.nhs.uk) – if you think you may have coronavirus, or have been in touch with someone who has the virus, do not go to a GP surgery, pharmacy or hospital, but first call 111 for advice.

DALLINGHOO NOTES

Church Rotas

Date	Service/Readers	Sides people

Flower and Cleaning Rota

4th - 11th April - Di and Linda (Easter all helpers please)

Church Opening and Closing

23rd March - 4 April - Jenny

6th April - 18th April - Annie

APOLOGIES & GET WELL SOON

Sincere apologies for there being no notes from Di Turner this month—unfortunately she was admitted to hospital a couple of days before the deadline. We hope you are feeling better and will be back with us again soon.

Betty Cole

DALLINGHOO ANNUAL PARISH MEETING

To be held on MONDAY 18th MAY

7.30pm start

At Dallinghoo Village Hall

If you have an item for the Agenda,
Please advise Chris Ling, Chairman
by 11th May.

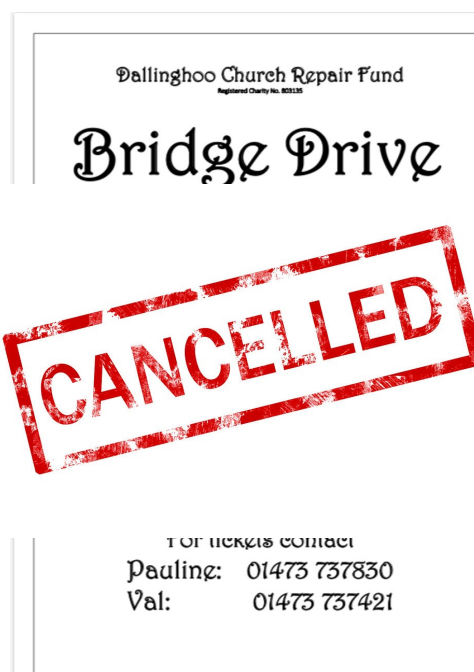
Email: dallinghoo.parish@outlook.com

The Dallinghoo Church Repair Fund's **Scheherazade Supper** on Friday 13th March was a great success and we raised over £1,000. This was mostly due to Chef Ruth Quinlan who cooked all day for us. Matters were complicated because, although twelve dropped out, 32 sat down and we enjoyed a truly wonderful and memorable meal.

Regards
Jeremy



Picture: Wikimedia



RIP Richard Arbon

My thanks to those friends who sent cards of sympathy on the sad loss of my son Richard. He lost his battle with cancer on February 7th only 57 years old he led a very full life using his many talents. Over 200 people showed their love and respect for him at his thanksgiving service. My love and thanks to you all.

Sue Arbon, Cathy and Keven and all the family

Why are so many churches dedicated to Mary?

Wikipedia tells us: "The Dowry of Mary (or Dowry of the Virgin, Our Lady's Dowry, and similar variations) is a title used in Catholic contexts to refer to England. The title dates back to medieval times and its use had become widespread by the middle of the fourteenth century. It reflects the deep devotion to Mary that existed in medieval England, and the belief that she took a particular protective interest in the country's affairs.

The word "dowry" (from the Latin *dos*, meaning "donation") is usually understood as the bride's family's donation. In medieval English law, however, the meaning was reversed - a husband would set aside a portion of his estate to support his bride if she became a widow. The historical understanding of England as "Mary's Dowry" was understood in the sense that England was "set apart" for Mary.

The title is believed to originate from the time of St Edward the Confessor. In 1061, Lady Richeldis, not a visionary but a woman of faith who pondered, meditated and prayed, believed that Our Lady had led her "in spirit" and showed her the house of the Annunciation where the angel had greeted her and asked her to build a replica; this became known as the Holy House.

"Look, daughter. Take the measurements of this house and build another one like it in Walsingham, dedicated to praising and honouring me. All who come there shall find help in their need. It shall be a perpetual memorial to the great joy of the Annunciation, ground and origin of all my joys and the root of humanity's gracious Redemption. This came about through Gabriel's message that I would be a mother through my humility and conceive God's Son in virginity."

The use of the title had become widespread by the middle of the fourteenth century and around 1350 a mendicant preacher stated in a sermon that "it is commonly said that the land of England is the Virgin's dowry".

King Richard II, in 1381, dedicated England to Mary in a ceremony in Westminster Abbey in thanksgiving for his kingdom being saved at the time of the Peasants' Revolt. He made a pilgrimage to Walsingham two years later. This dedication appears to be commemorated in a painting of 1399 which used to hang in the English College in Rome. This shows Richard and his consort kneeling before Our Lady. He holds a parchment with an inscription in Latin: 'This is your dowry, O pious Virgin'.

Also in 1399, Thomas Arundel, Archbishop of Canterbury, wrote to his suffragan bishops: "The contemplation of the great mystery of the Incarnation has drawn all Christian nations to venerate her, from whom came the first beginnings of our Redemption. But we English, being the servants of her special inheritance and her own dowry, as we are commonly called, ought to surpass others in the fervour of our praises and devotions."

By the reign of Henry V, the title *dos Mariae*, "dowry of Mary", was being applied to England in Latin texts and according to chronicler Thomas Elmham, English priests sought the intercession of "the Virgin, protectress of her dower", on the eve of the Battle of Agincourt" (1415).

The shrine was destroyed in 1538 and the statue burned in Chelsea.

HOO NOTES

Sunday 15th March

I was coming up the churchyard this morning seeing all the prim-roses and daffodils were out and sun was shining I thought how wonderful it is to be alive, then I thought of this coronavirus. How people are dying and worried, what is to become of our church and meetings. Is everything going to close down? All we can do is pray and hope in a few months things will get better. God Bless.

Margaret Doe



A little light relief

There was a real and tangible air of fear and mystery reigning over a London hospital's intensive care unit. It seemed that patients always died in a particular bed, regardless of their medical condition. This puzzled the doctors and some even thought it had a supernatural connection. No one could solve the mystery as to why the deaths always occurred at 11am on Sundays. So a world-wide team of experts assembled to investigate the cause of the incidents. The next Sunday morning, a few minutes before 11am, all the doctors and nurses nervously waited outside the ward to see for themselves what the terrible phenomenon was all about. Some were holding wooden crosses, prayer books and other holy objects to ward off evil spirits. Just when the clock struck 11, Billy Johnson, the part time Sunday cleaner, entered the ward and unplugged the life support system so he could vacuum.

CHARSFIELD WITH DEBACH NOTES

Church Rotas

Date	Readers	Sides person
Palm Sunday April 5 th 10.00am BHC Letheringham	Benefice Palm Sunday Service Holy Communion at Letheringham All Welcome	
Easter Day April 12 th 9.30am Holy Communion	Mike Pauline	Pauline
April 19 th 6.30pm Evening Prayer	Antony Ros	Ros
April 26 th 10am Holy Communion	Cherry Stephanie	Stephanie

Cleaning Rota for April

4th	11th	18th	25th
No Cleaning	Gill Beverley	Ros Lucy	Angela Joyce

Flower Rota for April

4th	11th & 18th	25th Apr & 2 May
Lent - No Flowers	Easter—Everyone	Sheila Green



St Peter's Church Fabric Fund - Diary Notes

Friday 15 May 10am – 12noon Coffee Morning at Hill Farm – tea/ coffee and cakes, plants, books, bric-a-brac, jams, pickles and raffle.

If you can help by baking a cake or cakes, donating bric-a-brac, books, making jams or pickles, please let Pauline (737517) or Margaret (737182) know. Gluten-free cakes will be very much appreciated. Please also let us know if you would like us to collect

Saturday 30th May Charfest Please come and see us at the **Big Raffle**

Please support these events and help keep our church building in good heart for future generations

CHARSFIELD GARDENS OPEN

Saturday 6 June 1-5pm

6 gardens open in Charsfield, in aid of Saint Elizabeth Hospice.

The Firs - Church Road

High Haven - Chapel Lane

Candle Cottage - Chapel Lane

The Thatch - The Street

Brook Farm - Church Road

Hill Farm - Church Road 77

Entry £6 covers all gardens.

Teas and plants for sale at Brook Farm.

The gardens are opening under the Saint Elizabeth Hospice Great Garden Trail.

Charsfield Baptist Chapel



Sunday services

11am each week

Coffee Pot

Every Tuesday from 10-12

At the chapel hall



There is a warm welcome for all. We hope you can join us.

Further information available from:

Mary Rowe on 01728 582243

Personal prayer The chapel is open each morning, Monday - Saturday for personal prayer between 9.30 and 10.30am.

The **Easter Sunday** service will be taken by John Green. Do come and join us at 11am.

Singalong Suppers

3rd April and 1st May

Held once a month in the Chapel hall. We start each evening at 6.30pm with something of general interest for half an hour. We then enjoy a buffet meal together. This is followed by a 'singalong' of hymns and songs at 8pm, finishing at 9pm. Do come and join us - you will be most welcome.



Below is an advert asking for parish councillors. We are currently in quite a serious position in running with three vacancies and face the prospect of the parish council failing. This means we would lose all representation at District and County Council levels and the ability to raise a precept. If you care about Charsfield please think carefully if you could contribute by becoming a councillor.

CHARSFIELD PARISH COUNCIL

VACANCY PARISH COUNCILLOR

Notice is hereby given that two vacancies have occurred within Charsfield Parish Council.

Are you interested in local current affairs?
Do you wish to serve your community?
Could you provide a voice for residents?

For further information or an informal chat please contact the Parish Clerk

Pam Hembra
Charsfieldparishcouncil@gmail.com
01473 737655
or
Jan Pedgrift
Janpedgrift@btinternet.com
01473 737701

The term of office will run until the next ordinary elections in May 2023.

There are approximately six Parish Council meetings a year.

This position is only open to people living in the Parish of Charsfield or within 3 miles of the Parish boundary (and on the Register of Electors) and those working or owning land within the Parish for the preceding 12 months.



St George's Quiz

FRIDAY 24th APRIL 2020

7PM

Charsfield Village Hall

Teams of 4 £10 per person

(Includes 2 course supper)

(Beef stew & dumplings-Veggie alternative-Fruit Crumble)

Book your place: Janpedgrift@btinternet.com

01473 737701

Licensed bar

Raffle

All profit to Charsfield Recreation Ground

CHARSFIELD FLOWER SHOW
8th August 2020

**PHOTOGRAPHY CLASSES FOR THE 2020 FLOWER
 SHOW**

Farm animal/s
 Bottle/s
 A plate of food
 Insect/s
 Cutlery
 Vehicle/s

A favourite plant in your garden

Your choice of a colour photo

Your choice of a black and white photo

Remember the date 8th August Charsfield Flower Show

See you at our plant stall at Charsfest on 30th May



SERVICES FOR APRIL 2020

Church	April 5th Palm Sunday <i>Red</i>	April 12th Easter Day <i>White</i>	Holy Week	April 19th Easter 2 <i>White</i>	April 26th Easter 3 <i>White</i>
Ashfield-cum-Thorpe					
Chars field w. Debach					
Cretingham					
Dallinghoo					
Earl Soham					
Hoo					
Monevden					
Letheringham					

CANCELLED

READINGS FOR APRIL 2020

	Hoy Communion	MP & EP	Psalm
April 5th	Luke Ch 19: 28-40 Isaiah Ch 50: 4-9a Philippians Ch 2: 5-11 Luke Ch 23: 13-25		
April 12th	Acts Ch 10: 34-43 John Ch 20: 1-18 OR Matthew Ch 28: 1-10		
April 19th	Acts Ch 2: 14a, 22-32 John Ch 20: 19-end	Acts Ch 2: 14a, 22-32 John Ch 20: 19-end	Psalm 16
April 26th	Acts Ch 2: 14a, 36-41 Luke Ch 24: 13-35	Acts Ch 2: 14a, 36-41 Luke Ch 24: 13-35	Psalm 16 vs 1-7



ASHFIELD NOTES

GEORGE RUSHMORE RIP

It is with sadness we have to announce the death of George a long standing resident of Ashfield after a short stay in Ipswich Hospital. George's funeral and burial will [Covid 19 permitting] have taken place by the time you receive this magazine. On behalf of everyone in Ashfield I extend our sympathies to Shirley and the family at this sad time.

RG.

CORONAVIRUS.

At the time of writing this things are changing fast with regards to the Coronavirus pandemic. It is best to follow the advice issued by Public Health England which is regularly updated. It is looking very much like older citizens and those who are vulnerable will be expected to "stay at home" for sometime. I would encourage residents to 'keep an eye' on their neighbours, particularly those living alone. Whilst it may not be appropriate to enter properties a simple phone call to establish they are ok will be helpful and appreciated.

RG.

MAGAZINE DONATIONS REQUEST.

It is the time of year where we invite you to make a donation towards the cost of providing this magazine to every household in the parish. Enclosed with this edition is a letter from the Rector and a Gift-Aid envelope in which to make your donation. Please make cheques payable to 'Ashfield PCC' and put the envelope through either Jane Davidson's [Ashfield Hall] or my letterbox at Corner View. Many thanks.



News from High Suffolk Rotary *See Facebook for more!*


**WE NEED
YOU
TO JOIN
OUR
CREW**

Professionals, skilled workers, business people, community leaders... all using their skills to benefit others. And having a good time doing it!

Want to be part of it ? Then please - get in touch.



Email: info@highsuffolkrotary.org



www.highsuffolkrotary.org



Highsuffolkrotary

Join Rotary
Make friends
Have fun
Help others

STRANGE TIMES...

These are difficult times for all of us.

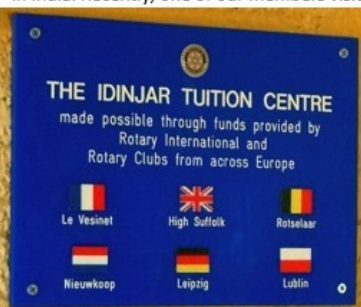
"Flu" has always been one of those illnesses that we take for granted, but which has always been quite dangerous, especially to those with pre-existing chest and heart complaints. To put current events into context, the World Health Organization estimates that "normal" flu kills up to 650,000 people worldwide each year. And the influenza pandemic of 1918-1919 killed more people than World War I.

It's easy to be despondent and think how bad things are – but... in reality, we've never been in better shape to deal with the health implications of the current outbreak. We live in a much better world than 100 years ago, we know a lot more about how to look after people with illness, and (in Europe at least) healthcare no longer depends on how much money you have.

As usual, Rotarians across the world will be doing what they can to help those who suffer the most, not only to deal with illness, but to provide even more basic needs – such as safe drinking water and sanitation.

A VISIT TO INDIA

Over the last 10 years or more, several Rotary clubs in this area have donated funds to a local charity, the **Friends of the Banyan Tree (FoBT)** which supports the work of charities improving the lives of indigenous (tribal) peoples in India. Recently, one of our members visited India and re-established links with a previously supported project.



Our connection with FoBT goes back to 2013, when the club raised substantial funds for the charity with the help of our European partner clubs. The money raised helped pay for the building of a new community centre in Idinjar, Kerala, to be used for educational and social purposes. Last year the club also donated money to help with flood relief. Other clubs in Suffolk have also made substantial contributions over the years, notably **Woodbridge Rotary Club** who recently paid for new hand washing, kitchen and internal fittings.

In February, Rotarian Chris and his wife Anita were on holiday in India and took the opportunity to re-visit Idinjar. They were able to observe (and join!) classes for local children in subjects from English to Physics, as well as seeing a visiting doctor providing

treatment for local people in the centre. Chris and Anita also donated an LED digital projector which will find a good deal of educational use by the charity (the charity will need to provide a screen and stand for use with the projector – if any individual or group like to help towards the cost of these, please contact the club).

DO YOU USE AMAZON?

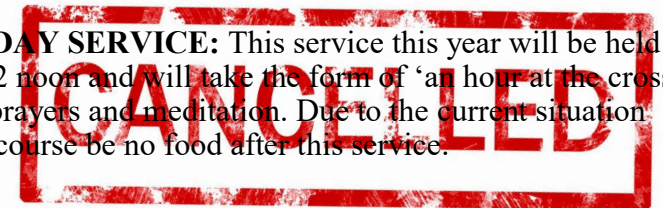
If so, did you know that you can help raise funds for High Suffolk Rotary in the process? Just go to smile.amazon.co.uk and follow the instructions – search for **Rotary Club of High Suffolk Trust Fund**. Contact us if you need help.

MONEWDEN NOTES

Church Rotas

Date	Flowers & Brasses	Cleaning
April 5th	C. Saxby	
12th	F. Watts	J. Vonberg
19th	W. Heath	
26th	S. Kingston	W. Heath

GOOD FRIDAY SERVICE: This service this year will be held on April 10 at 12 noon and will take the form of 'an hour at the cross', with music, prayers and meditation. Due to the current situation there will of course be no food after this service.



100 CLUB WINNERS: Mrs. M. Osijo, S. Rose, Mr. R. Keeble

CHURCHYARD CLEAR-UP this year will take place on Saturday, May 9th, from 10am onwards. We really could do with a few more helpers!



NEW HOBBY, NEW VENUE, NEW TIME.....

Time for a little change. Our monthly stitching session on **Friday 3rd April**, will be an extended time from 10 – 2pm., this is so that we can get more completed in the time. We are a small friendly group from beginners to advanced stitchers, sewing under the guidance of Alison Pearce who has almost 30 years of experience in hand sewing, patchwork, quilting, applique and cross stitch. Please also note that these sessions will now be held in my home, The Cartshed, Firs Farm, Monewden, instead of the village hall now that my craft room is up and running!

£5 per session, materials etc extra.

For more information call Alison on 01473 737155 or email: Alison.pearce1970@yahoo.co.uk.

CORONAVIRUS

Due to the current and ongoing situation with regard to Corona-virus the following events have been cancelled -

- **Saturday café** - This event will now not take place until further notice
- **Local history** - The April meeting has been cancelled, and we will hopefully restart for the 2020/21 session on September 9th in the village hall at 7:30
- **Spring sale** - which was scheduled for May 2nd will now not take place

CRETINGHAM NOTES

Flower and Cleaning Rota

	Altar Flowers	Cleaning
April	Mrs Runacres	Mr & Mrs Defoe
May	Mrs Chenery	Mr & Mrs Runacres

CELEBRATING EASTER AT ST. PETERS CRETINGHAM:

EASTER STALL in CHURCH

Saturday 11th April 2020 10am to 12 noon

Apologies this event has been cancelled due to advise from the Diocese regarding the Coronavirus.

Easter Flowers in Church

Do pop in and visit to view the marvellous flower displays in each window and on each ledge decorated in the colours of Easter.

'because you have seen me, you have believed; blessed are those who have not seen and yet have believed' (John Ch20 v29)

APRIL CHURCH SERVICES in St. Peters Cretingham

5th No service at Cretingham please see your magazine for nearest service.

9th Maundy Thursday Holy Communion & Stripping the Altar 7pm.

12th Easter Holy Communion 10 am

19th Morning Prayer 10 am

St. Peters Church Cretingham's Annual Parochial Church Meeting

is on Thursday 20th April 2020 commencing at 7.30pm in Monewden Village Hall. This is a joint meeting with other churches in our benefice i.e. Ashfield & Monewden. If you are unable to attend but have something you want to say please let your Churchwardens know.



LEATHERINGHAM NOTES

RIP Roger Keene

Roger Keene born 19th May 1930, died 16th February 2020, lived in Letheringham after retiring from a career as an architect. He practiced in Leicester and worked for English Heritage as an expert in restoration of ancient buildings. Roger was well known in Letheringham, played the organ for many years in the church and formed a choir which specialised in English Tudor period choral music. Many Christmas Carol services, Easter Sunday Services and Benefice Services contained music directed by Roger. Those of us who participated in the choir practices at his home were always made very welcome and there was plenty of refreshments provided by Roger's wife Sylvia.

After graduating from architecture school his long and distinguished career commenced in Peru where Architectural Modernism was flourishing. His interests spanned all kinds of music and art, he was a member of the Gilbert and Sullivan Company in Leicester, and after moving to Suffolk sang in the Britten-Pears Choral Society. Roger Keene was one of the small band of organisers of the now famous Letheringham Mardles, informal lectures on local history and held monthly in Easton village hall. A few days before each event he would drive round our parishes delivering flyers. Many of us will remember the art exhibition held in Easton in aid of Letheringham Church. Although several years ago Roger and Sylvia moved to Woodbridge he is fondly remembered by all who knew him here.



USEFUL INFORMATION

In this very difficult time and not knowing how we are going to get a delivery slot from the supermarket—Did you know your local Coop often does deliveries free if you order over £25.

Wickham Market - phone in your list between 10am and 2pm and they deliver your order over £25 for free. 01728 746313.

Framlingham - Order phone number is 01728 621415, however they are prioritising shelf stacking over deliveries and may not have any slots currently!

OUR READERS ARE PLEASED TO HAVE LOCAL BUSINESSES TO CONTACT WHEN THEY NEED PROFESSIONAL SERVICES.

If you would like to advertise in this magazine's **Directory of Local Businesses** please contact Mrs. Caroline Saxby, our advertising Manager who will be pleased to give you full details. Get in touch with her by phoning 01473 277146 or e-mailing: saxbies@hotmail.com

SPACE AVAILABLE

Suffolk Dog Training

- Dog Agility
- Dog & Puppy Training at Earl Soham
- Affordable Private Lesson's



Kennel Club accredited instructor

Contact: Sue 07971 030960 or 01394

410051www.suffolkdogtraining.co.uk



LOCAL WINDOW CLEANER

I am a registered sole trader and have been cleaning windows over 15 years I offer a conscientious service and do insides as well if required. Conservatories and windows above them can be done too.

Feel free to give me a call and arrange a free quote.
call Kevin Saunders on 07549147871

The Postman Fencing Services

Agricultural and Equestrian
Fencing
Mechanical Post Driving & Gate
Installation
Andrew Muttock
Tel: 01728 628078 or
07876355579
ajmthepostman@yahoo.com



Tree Care Professionals

Glynn Davies FdSc (Arb)
Tree Surgery
Reports and Surveys
TPO & Conservation
Applications
Planting and Aftercare
Hedge Cutting

NPTC Certified, Fully Insured
All Arboricultural Services Provided
Mob: 07722588713
Tel: 01728 561529
www.terrestrialarboriculture.co.uk

S.G.Parker Painting & Decorating

Interior & Exterior
City & Guilds
Over 30 years experience
Reliable & friendly service
For a free estimate

Please call:
01728685980
Or
07572966167



GARDEN MACHINERY SALES, SERVICE & REPAIRS

COLLECTION/DELIVERY SERVICE AVAILABLE
6A MEADOW WORKS BUSINESS PARK,
DEBENHAM. Tel 01728 860330



Repair, Full Restoration or Simple Mechanical Resuscitation for all makes of bicycle
Specialising in British Made Bicycles from 1950-1990
For Information & Advice Call: 07954 341972

SPACE AVAILABLE

SPACE AVAILABLE

Ooh! Sore Feet?

Mr Cleeve Offord MAFHP MCFHP, Dawn Kaylor MAFHP MCFHP
Hollie Offord MAFHP MCFHP

Fully Qualified VISITING Foot Health Practitioners

Due to continued success and expansion of the practice we are now able to offer our professional and reliable service in your area
Treating: calluses, ingrown nails, corns, hard skin, the Diabetic foot and most common foot problems.



All in the comfort of your own home
we are fully insured, DBS checked,
dementia and alzheimer trained



Office: 01473 720655

Cleeve Mob: 0794 7971270, Dawn Mob: 0776 455073
Hollie Mob: 07850 170725



- * CLEAN & FRIENDLY SERVICE
- * FULLY INSURED
- * SMOKE TESTS
- * INSURANCE CERTIFICATES
- * CCTV INSPECTIONS
- * COMPETITIVE RATES

PLEASE CALL 01986 799175



REGISTERED MEMBER OF THE INSTITUTE OF CHIMNEY SWEEPS

Neil's Garden Services

Hedge cutting, light and heavy-duty
strimming, mowing, clearing and tidying.

Fencing, paving and light construction

07766 091020 nsteinle@btinternet.com



Paddock Maintenance

Harrowing

Rolling

Fertilizing



Hedge-Cutting

Spraying

Topping

General Maintenance

01728 628054
07889 311734

juliansayer@btinternet.com



Yew Tree Court

Framlingham Road, Earl Soham

For Sale

Serviced Plots to Build Own
Business Premises

For details contact Bruce Hinton

Tel: 01728 685060

Mobile: 07711 016664

brucehinton@suffolkonline.net



Charsfield Village Hall

EXCELLENT VENUE FOR HIRE

Birthday parties, Fundraising events or Business Meetings
Main Hall: from £11/hour (off peak, inclusive rate)
Committee Room: £7/hour (off peak, inclusive)
Whatever the event, check out facilities, equipment, availability,
prices and book on line at:
www.charsfieldvillagehall.org.uk
Or Telephone 07788957558
Discounts for local bookings
Discounts given to registered charities

TREES WANTED FOR FIREWOOD

REMOVED PROFESSIONALLY
FREE OF CHARGE



ROBERT GRAY
01473 737462
07788267311

E. B. Button & Sons Ltd.

Established 1875

(Independent Family Funeral Directors)

Directors: I V M Moore,

K J Eagle, C S Moore, Dip F.D., S J Moore

Funeral Directors

PRE-PAID FUNERALS - REST ROOMS

HEARSE AND CARS

24 ST. JOHN'S STREET, WOODBRIDGE,
SUFFOLK Telephone: 01394 382160

8CW WINDOW CLEANING

For all your window cleaning needs,
regular or one-off.

Well established window cleaner
who also cleans and clears gutters,
fascia's & conservatories.

Simon Burton

www.8CW.co.uk simon@8CW.co.uk

07515 733 600

DAVID HANNATT

Home: 01473 333268

Mob: 07899 288546

Email: davidhannatt@gmail.com

PAINTING AND DECORATING
CERAMIC TILES
GENERAL GARDENING
& GRASS CUTTING
FREE ESTIMATES

LESTER MAYES Peasenhall

Carpet & Upholstery
Cleaning

FRIENDLY, LOCAL SERVICE

Carpet & Fabric Protectors
applied

Moth Treatments available

01728 660186
Mobile: 07867 681571

Horse Sitting Suffolk

FULLY INSURED

www.horsesittingsuffolk.com

julia@horsesittingsuffolk.com

Tel 01728 685563

Mob 07804 444417

Going on holiday? Away for the weekend? Or just
going to be back late from work and need someone
to bring your horse in before it gets dark?

SARAH SUTCLIFFE PET CARE & HOUSE SITTING



Your horses turned out, mucked out.
Your ponies exercised, your dogs walked
and cats fed & all other animals cared for
while at work or on holiday.

Tel: Sarah Sutcliffe

Mobile: 07990 875 833

daveysarah23@gmail.com



W. SHARPE COMPUTER SERVICES

- * Computer Repairs, Upgrades & Sales
- * Printer Repairs & Sales
- * Computer Networking
- * Internet Support
- * Fax Machine Repairs
- * Advice & Help for Beginners



Claremont, Low Road, Earl Soham,
Woodbridge, Suffolk IP13 7RN

Tel: 01728-685 905

Graham Fowler Painter & Decorator



For reliable, professional work
at very reasonable prices.

Also available for all those small jobs
around the house that no one else
wants to come out and do.

For a free quote call now on

01728 685 448

07798832636

S. C. CLIFFORD PAINTER & DECORATOR

- * Interior/Exterior
- * Private & Commercial

FREE ESTIMATES

9 Stowmarket Road
Stonham Aspal
Stowmarket
Suffolk IP14 6AB

Tel: (01449) 711 369



BRIDGE HOUSE EARL SOHAM

En-suite Accommodation
Lunches and Dinners Catered
Also

Outside Catering for all occasions

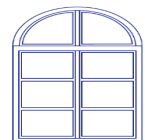
01728 685473

07799805171

bridgehouse@suffolkonline.net

www.bridgehouseuk.com

www.jenniferbakercatering.com



MILES ROLFE JOINERY

Production, Design & Fitting of All
Aspects of Joinery & Furniture

Gt. Finborough • Suffolk

07880 776845 mobile
mrjoinery@live.com

01449 771338 evening

Kindlewood

Tree surgeons.

we also carry out Hedge cutting,
Grass cutting, Tractor flail mowing,
Log splitting, Timber extraction.

Please contact for a free quote.

NPTC qualified - Fully insured

Please call phil : 077867 34706

lee: 07891 845966

Email : info@kindlewood.biz
www.kindlewood.biz



Brian Davey - Property Maintenance

Painting & Decorating, Drives, Patios,
Garden Walls and all repair work

Local Business - covering Hoo,
Framlingham & Woodbridge Areas

Telephone (Hoo) 01473 737748

Marks Maintenance

All types of
house & garden
property maintenance
under taken

Phone Home: (01728) 621341
Mobile: 07887 925507

Website: www.marks-maintenance.weebly.com
e-mail: MarksMaintenance@hotmail.co.uk

RCW
Carpentry and
Cabinet Making

Specialising in
Bespoke Kitchens
and Furniture

07970379817
rcwkitchens@hotmail.com

Need help with your PC?

...or your Laptop, iPad, TV...

Friendly help, advice and training

Hardware & Software

Repairs & Upgrades

Phone Chris on 0757 069 5279

Or Email: info@ubestree.co.uk

Web: www.ubestree.co.uk

Debenham and District

MOORE BROS.

Builders, Decorators &
Funeral Directors

24 hour service

C. S. Moore Dip. F.D.

I. R. Moore Dip. F.D.

5 Woodbridge Road,
Framlingham, Suffolk IP13 9LL

Telephone: 01728 723 448

Fax: 01728 723047

i773moore@btinternet.com

**CARAVAN STORAGE
BOAT STORAGE
20FT PRIVATE STORAGE
CONTAINERS
IN
CHARSFIELD
Telephone Mike Lloyds
07764515100**

Earl Soham Business Centre TO LET

Offices, Workshops and Storage for
Individuals and Small Businesses

For details contact Bruce Hinton

Tel: 01728 685 060

Mobile: 07711 016664

brucehinton@suffolkonline.net

www.earlsohambusinesscentre.co.uk



Gull Cottage Cattery

A safe, peaceful and attractive
rural retreat, exclusively for cats,
where cuddles are guaranteed

Dallinghoo, Woodbridge, Suffolk IP13 0LT

Contact Lawrence & Juliet Frohn

Tel: 01473 737450

E-mail: cats@gullcottagecattery.co.uk

www.gullcottagecattery.co.uk

USEFUL CONTACTS

Clerks to Parish Councils

Ashfield	Mrs Sarah Clare E-mail: actpc.clerk@gmail.com Tel: 01449 781671
Charsfield	Pamela Hembra E-mail: charsfieldparishcouncil@gmail.com Tel: 01473 737655
Cretingham	Acting Clerk : Caroline Saxby E-mail: cmhparishcouncil@gmail.com Tel:
Dallinghoo	Chris Ling E-mail: Dallinghoo.parish@outlook.com Tel: 07963305205
Earl Soham	Guy Harvey E-mail: gutharvey1@btinternet.com Tel: 01728 685729
Hoo	Jane Page (see Cretingham above)
Letheringham	David Allan E-mail: letheringham@btinternet.com 07411 277784
Monewden	Caroline Saxby (see Cretingham above)
Village Hall/Community Centre Booking Secretaries:	
Ashfield	Geoff Henney Tel: 07507 040041 Email: sueandgeoffhenney@hotmail.co.uk
Charsfield	Website: www.charsfieldvillagehall.org.uk Email: enquiries@charsfieldvillagehall.org.uk Or Tel: 07935 445193
Dallinghoo	Mr Chris Pennington Tel: 01473 737 836
Earl Soham	Lorna Perkins Tel: 01728 684827 Email: esvhbookings@gmail.com
Monewden	Sian Kingston Tel: 07887606717 Email: sian@rskingston.com

Village Organisations			
ASHFIELD	Community Council	Ms Sam Thomas	07985 807683
"	Ladies Group	Mrs Susan Hansen	01728 685 738
CHARSFIELD	CEVC Primary School	Dr Paul Parslow-Williams	01473 737 347
"	WI Secretary	Mrs Rosalin Baley	01473 737171
"	Rec. Ground Com	Mrs Jan Pedgrift	01473 737 701
"	Tennis Club	Mrs Pauline Llewellyn	01473 737 517
"	Flower Show Secretary	Mrs Pip Smith	01473 277166
"	Village Hall	Pam Hembra committee@charsfieldvillagehall.org.uk	
CRETINGHAM	100 Club	Mr. Alister Gourlay	01728 685 335
DALLINGHOO	Rec. Ground Com.	Mr. Derek Spall	01473 737 565
"	Carpet Bowls Club	Mr. Cliff Green	01473 737 421
"	Village Hall Com.	Mr. Derek Spall	01473 737 565
EARL SOHAM	FO St. Mary's	Mr. John Stott	01728 861 340
"	Primary School	Mr. Lambillion-Jameson	01728 685 359
"	Neighbourhood Watch	Mrs J. Sheffield Mrs Mary Patterson	01728 685 403 01728 685 362
"	WI Secretary	Mrs Daphne Dale	01728 621 292
"	Village Hall Com.	Lorna McCurrach	01394 388807
"	100 Club	Mr. R. Tinkler	01728 685 278
"	Tennis Club	Mrs Mary Patterson	01728 685 362
"	Bowls Club	Mrs Pam Sykes	01728 685 519
"	Scouts/Cubs/Beavers	Mrs J. Lovett	01728 723 712
"	Carpet Bowls Club	Chris Pratt	01728 685745
	Allotment/Gardeners Association	Mrs Mavis Kerridge Mr. John Stark	01728 685 700 01728 684 385
MONEWDEN	Local History Society	Mr. Peter Driver	01728 724 951

EASTER

WORD SEARCH

S U E X I W R K Y B C
 I A C I D B X V U R S
 B D V E J K T N O R E
 J N P I B V N S E T G
 M E J H O Y S W E Q L
 R Y M E V R O K V X S
 N G C D I L S T N A U
 C C L S F A E G G S S
 I S E H B J A U D W E
 D N V Y Y A D N U S J
 D O S W T T O M B X S

RISEN SUNDAY
 CROSS FLOWERS
 TOMB EGGS
 JESUS BASKET
 SAVIOR BUNNY

